

Item No.: 31013001

Solar Ground Mounting Structure

-Single pole

Wind load: 30m/s~55m/s

➤ **Design criterion**

Basic Wind Pressure: 0.5-0.8 KN/m<sup>2</sup>

Panel size: 1650x992 mm 2x10 Portrait

Covered area : 3.6X10.3M<sup>2</sup>

➤ **Product Introduction**

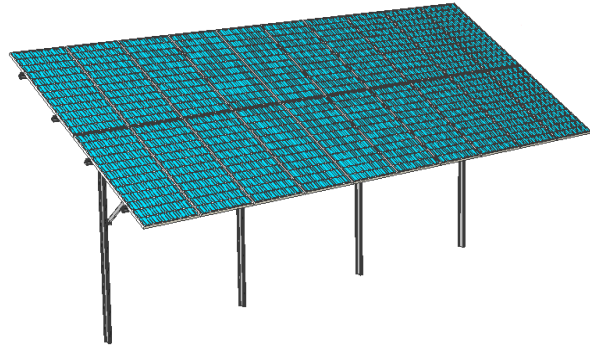
Product Material: 6063-T5 Aluminum alloy  
(Anodized with thickness>10um) , Q235

Hot-galvanized H-steel with  
thickness>70um)

Fastener Material: Stainless steel (SS304)

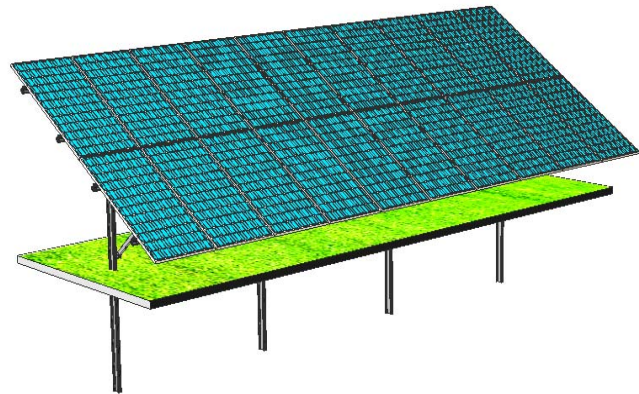
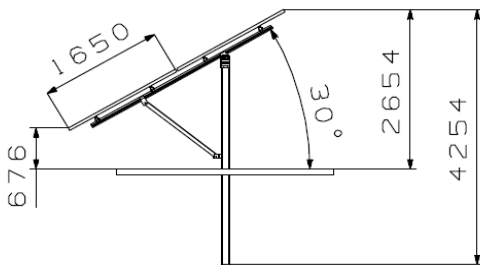
Angle: 20~40degree

The distance from lowest point of panel to  
ground: 300↔500 mm

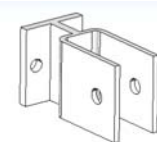
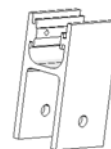
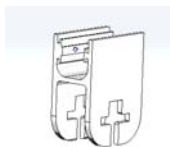


➤ **Product Characteristic**

- Single pole-hammered pile(H-steel)
- High strength
- ✧ Apply to ground mounting
- ✧ Adopt stamping pile
- ✧ With distance from ground to the lowest point of panel



➤ **Components**



height adjustable    rail connector-up    pole connector-up    rail connector-down    pole connector-down

Room 1005, No. 939 JinQiao Road, Pudong, Shanghai China 200136

Tel: 61600231, 61600232, 61600233

Email: [christina.rao@frontierack.com](mailto:christina.rao@frontierack.com)

[www.frontierack.com](http://www.frontierack.com)